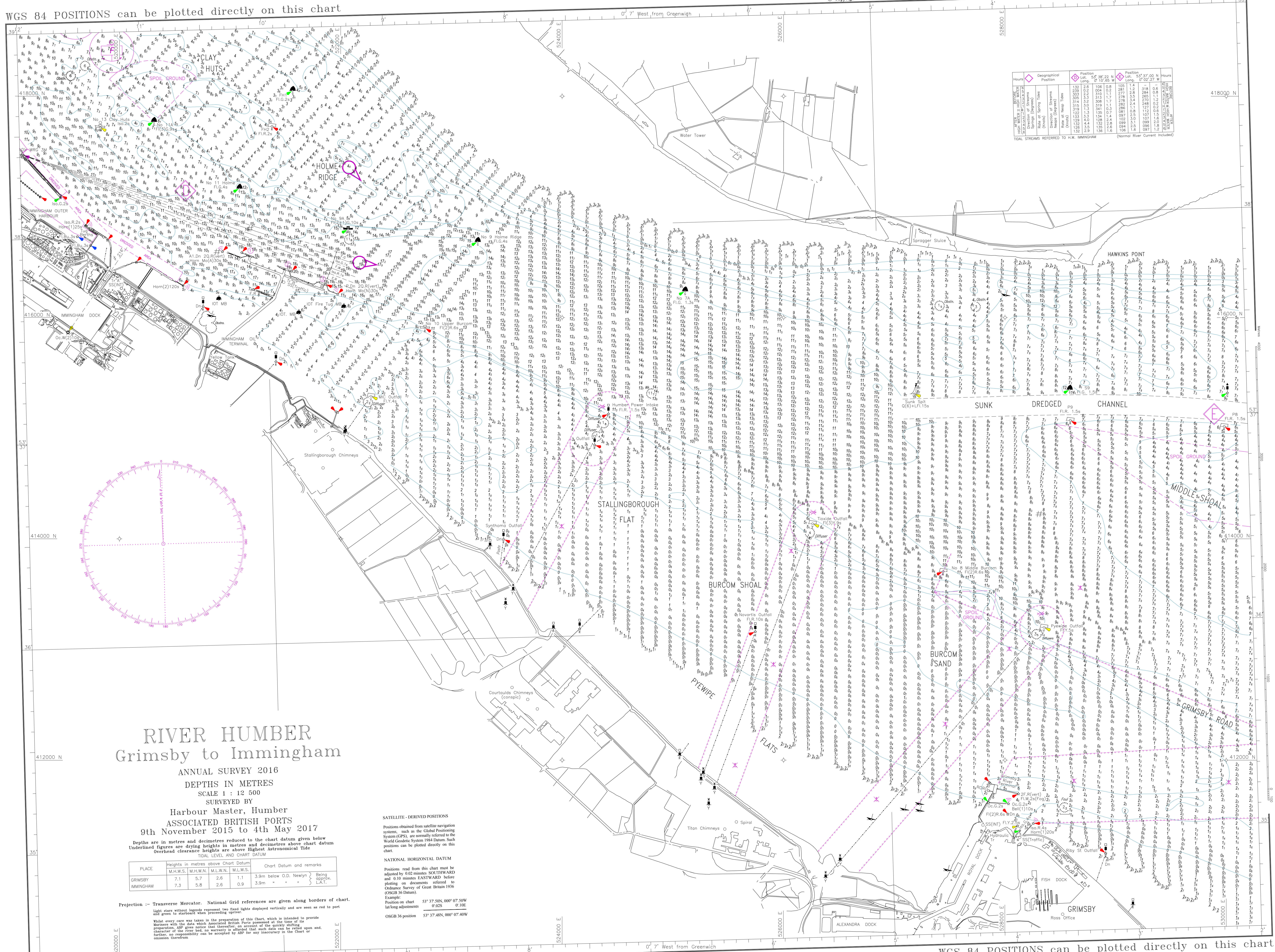


WGS 84 POSITIONS can be plotted directly on this chart

© Copyright 2017. All rights reserved. No part of this product may be reproduced in any form (including photocopying or by electronic means) without prior permission.



Geographical Position	Position		Position		Hours
	Lat.	Long.	Lat.	Long.	
Immingham Harbour	53° 40' 30" N	009° 02' 00" W	53° 40' 30" N	009° 02' 00" W	0000
Grimsby	53° 37' 00" N	007° 50' 00" W	53° 37' 00" N	007° 50' 00" W	0000

TIDAL STREAMS REFERRED TO H.W. IMMINGHAM (Normal River Current Included)

RIVER HUMBER

Grimsby to Immingham

ANNUAL SURVEY 2016
 DEPTHS IN METRES
 SCALE 1 : 12 500
 SURVEYED BY

Harbour Master, Humber
 ASSOCIATED BRITISH PORTS
 9th November 2015 to 4th May 2017

Depths are in metres and decimetres reduced to the chart datum given below
 Underlined figures are drying heights in metres and decimetres above chart datum
 Overhead clearance heights are above Highest Astronomical Tide

TIDAL LEVEL AND CHART DATUM

PLACE	Heights in metres above Chart Datum		Chart Datum and remarks
	M.H.W.S.	M.L.W.S.	
GRIMSBY	7.1	5.7	3.9m below O.D. Newlyn - Being Dredged
IMMINGHAM	7.3	5.8	2.6

Projection :- Transverse Mercator. National Grid references are given along borders of chart.
 Light stars without legends represent two fixed lights vertically and are seen as red to port and green to starboard when proceeding upriver.
 Where every care was taken in the preparation of this chart, which is intended to provide Mariners with the data which Associated British Ports prepared at the time of its preparation, ABP gives notice that it does not accept any liability or warranty for any error or omission therefrom.
 OSCR 16 position 53° 37' 48N, 007° 40' 40W

SATELLITE - DERIVED POSITIONS
 Positions obtained from satellite navigation systems such as the Global Positioning System (GPS), are normally referred to the World Geodetic System 1984 Datum. Such positions can be plotted directly on this chart.
NATIONAL HORIZONTAL DATUM
 Positions read from this chart must be adjusted by 0.02 metres SOUTHWARD and 0.10 metres EASTWARD before plotting on documents referred to Ordnance Survey of Great Britain 1938 (OSGB 36 Datum).
 Example:
 Position on chart 53° 37' 50N, 007° 50' 10W
 Adjustment: S 0.02, E 0.10
 OSCR 16 position 53° 37' 48N, 007° 40' 40W